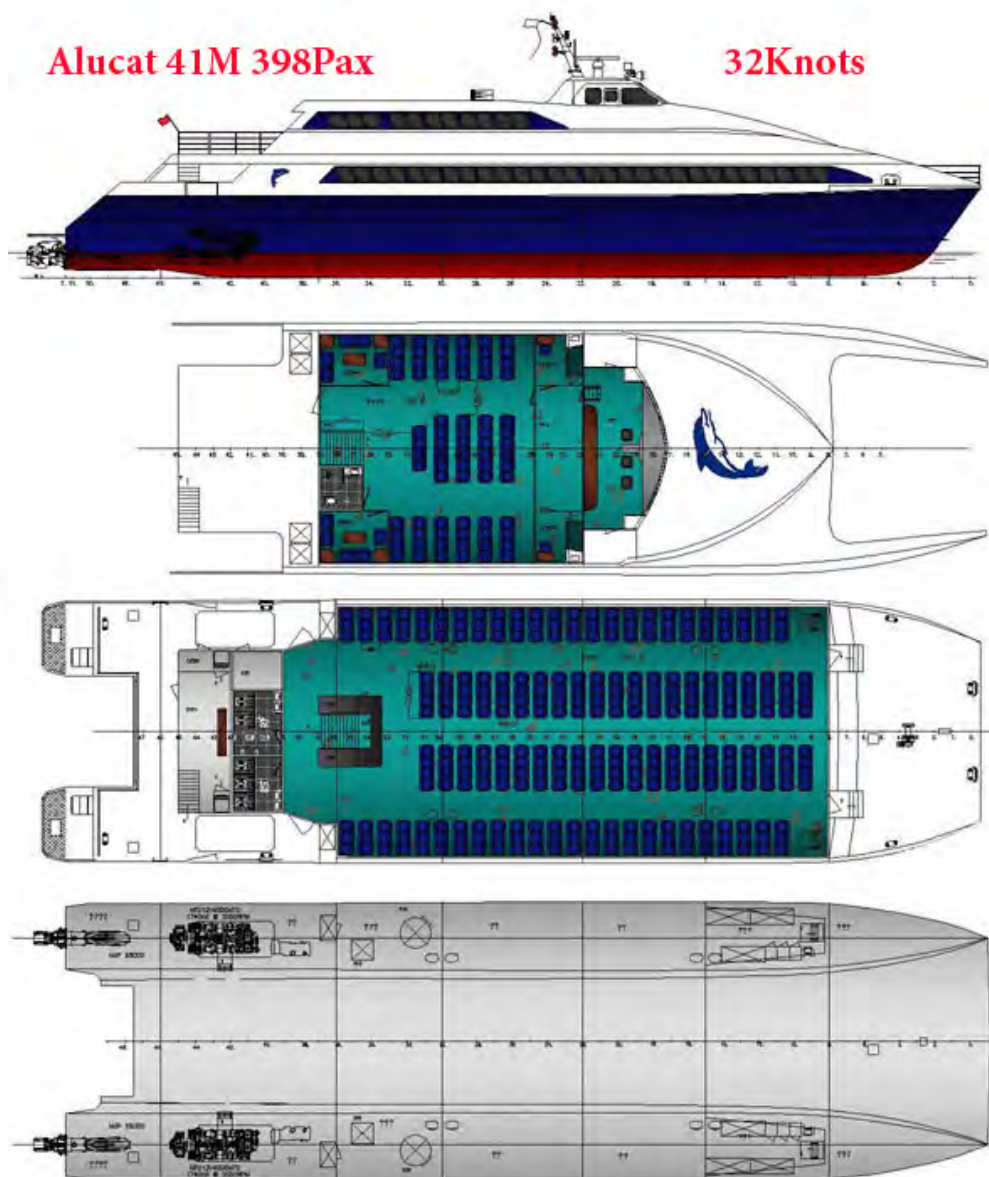


Tel: UK: +44 (0)208 133 9203
+44 (0)745 238 4267
USA: +1 (206) 866 5730
AUSTRALIA: +61 (08) 6102 0192
NIGERIA: +234 (0) 703 883 3437
+234 (0) 816 265 1068
Vmail & Fax:- +44 (0) 207 681 1505
Skype:- Alunow

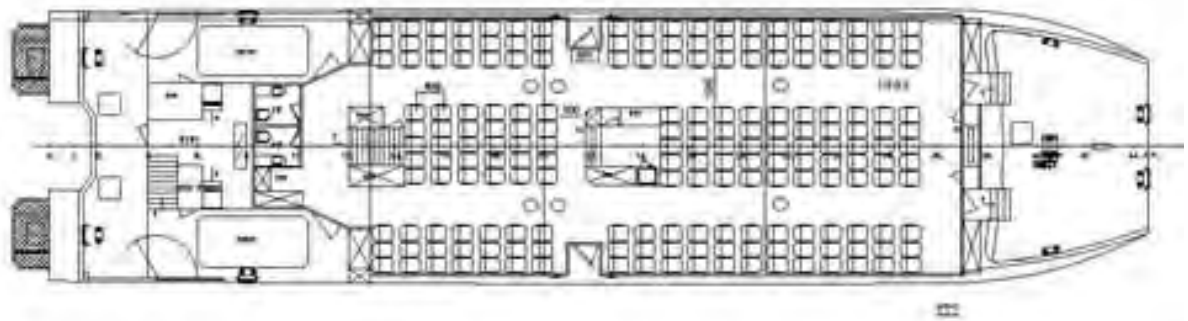
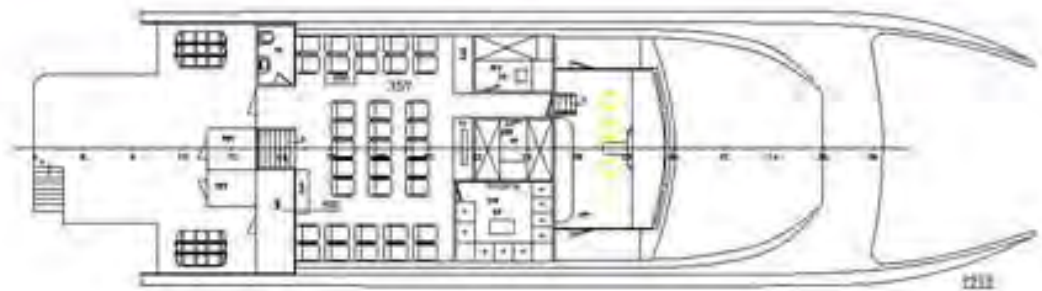
New Fast Ferry Concepts

The following concept/design samples are provided to allow/assist our clients to choose the vessel(s) that meet their requirements and once the commissioned design is approved to be built by the AluminumNow Group.



Alucat 36m

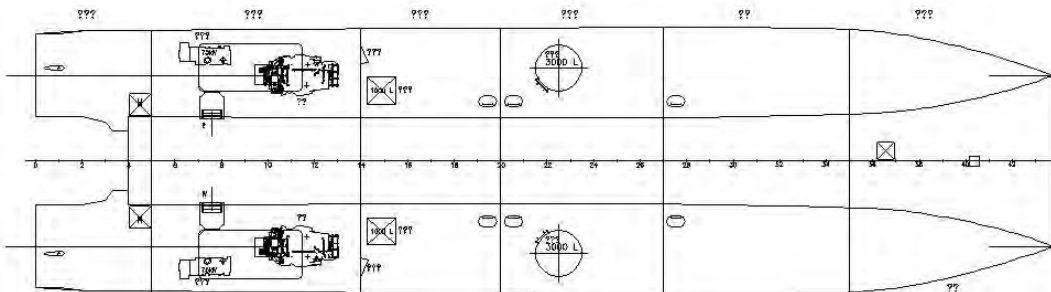
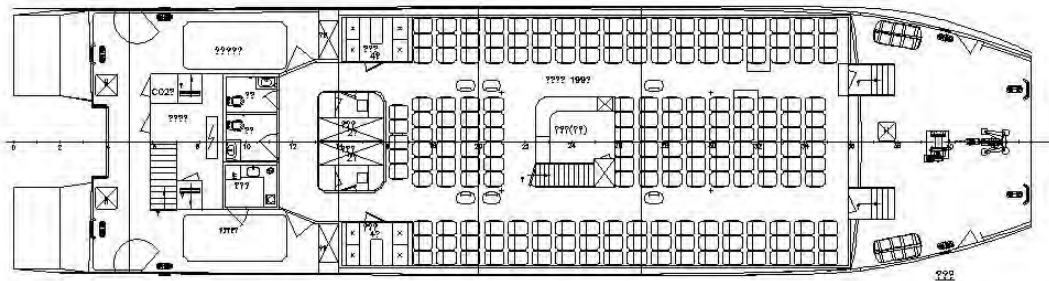
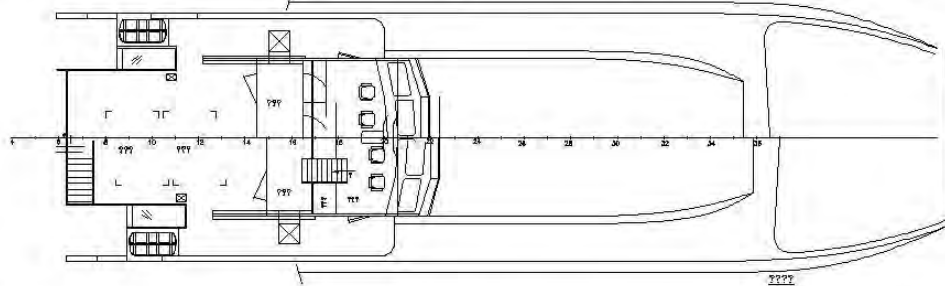
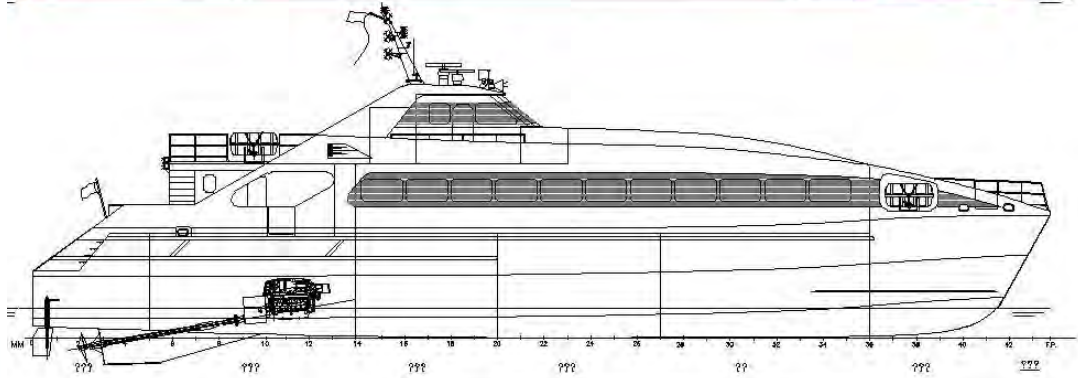
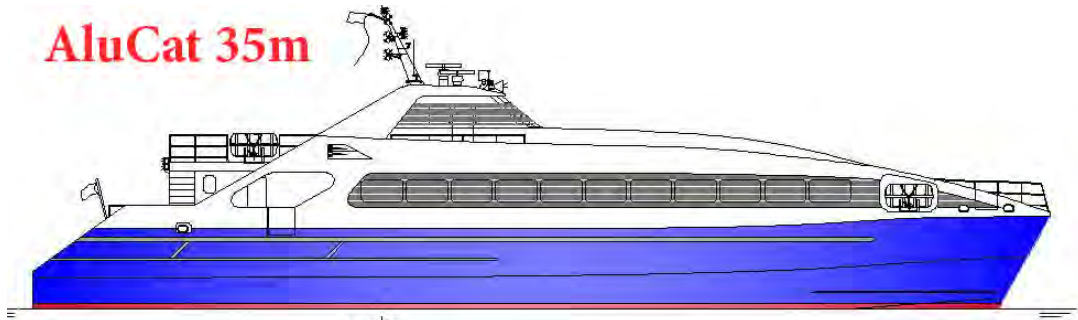
28 to 34 Knots



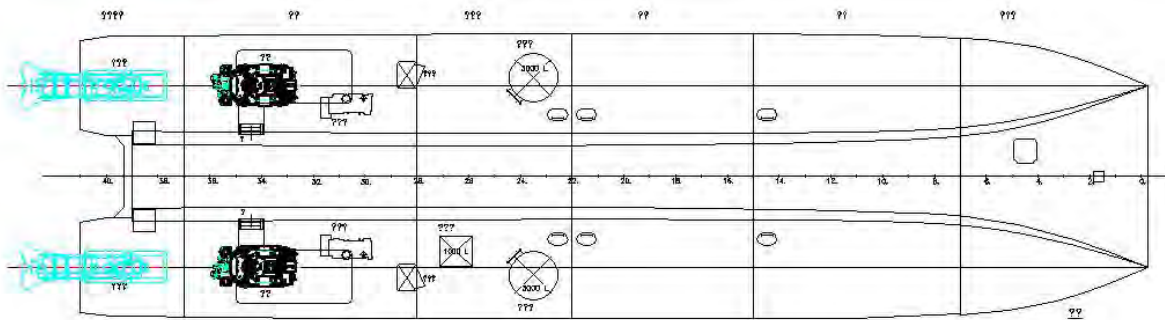
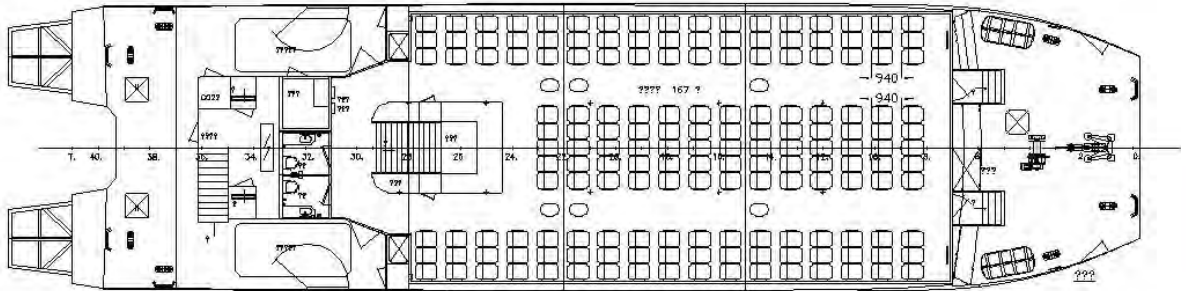
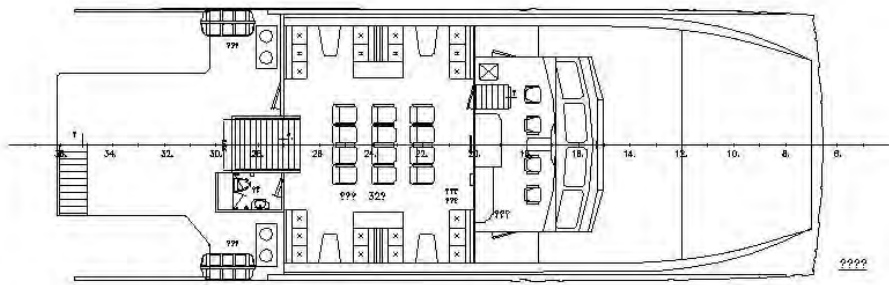
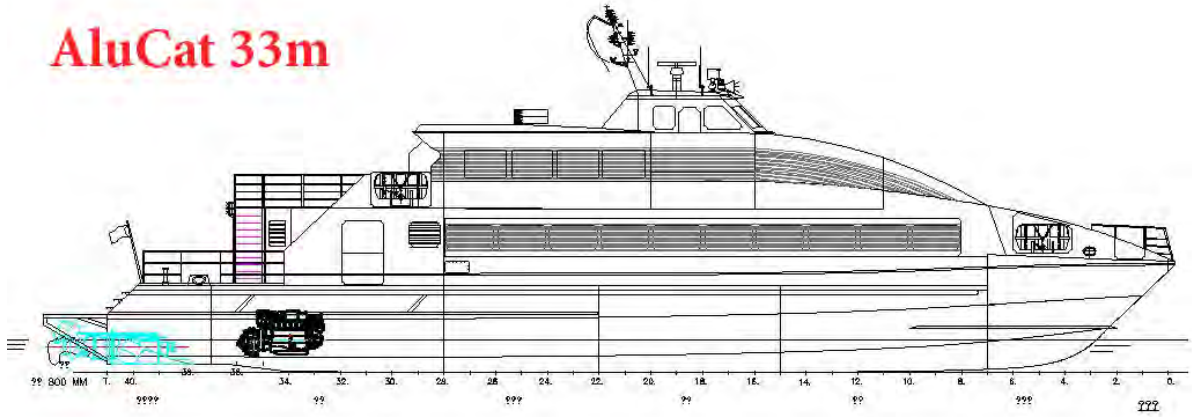
238 to 300Pax

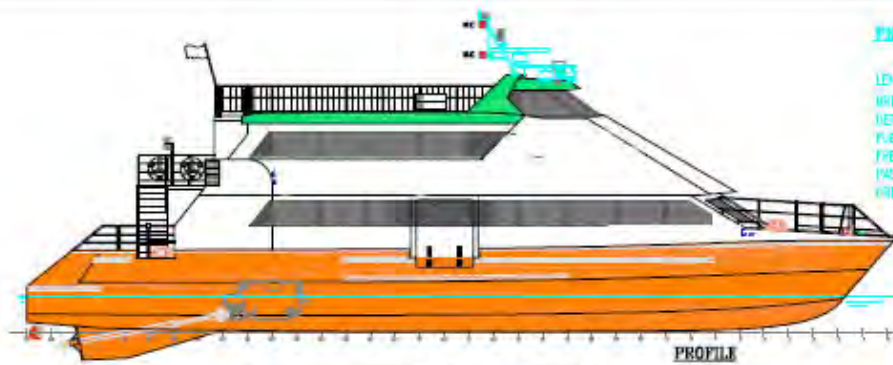
with design modifications

AluCat 35m



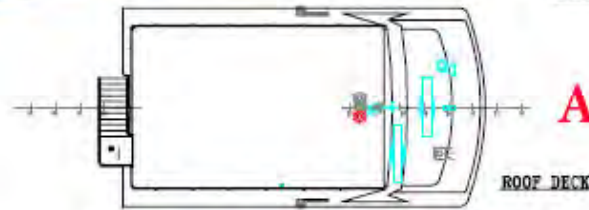
AluCat 33m



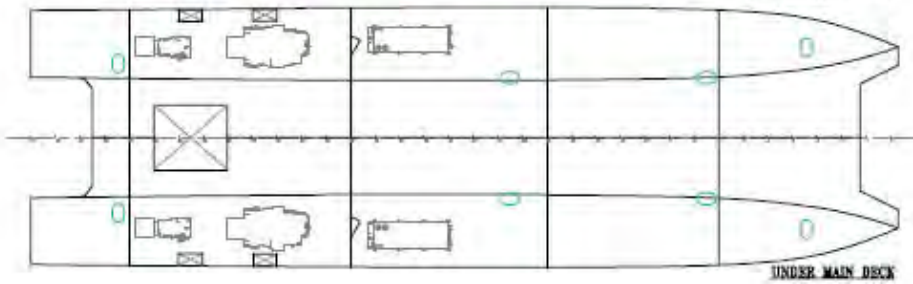
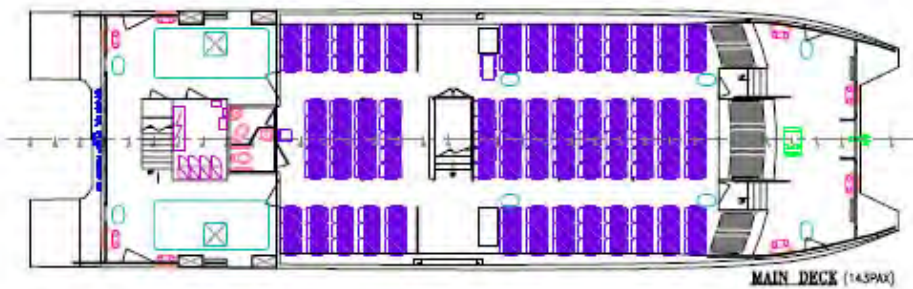
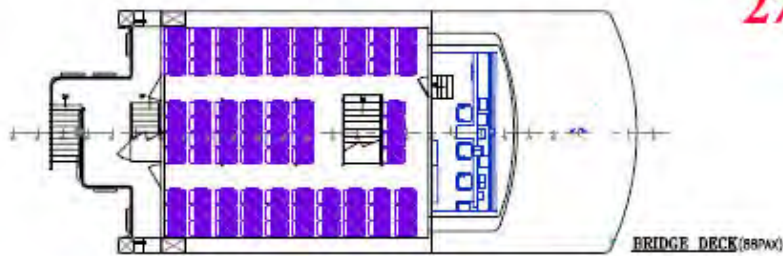


PRINCIPAL PARTICULARS

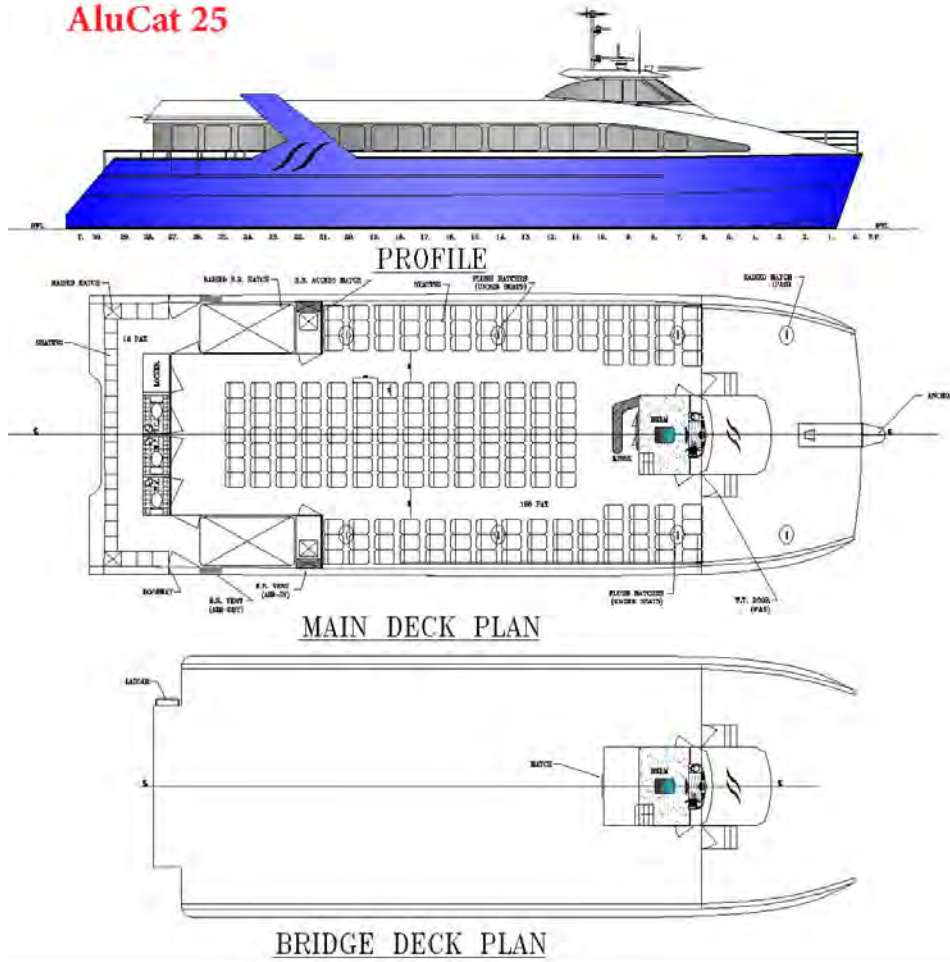
LENGTH (L ₆₄)	28.33 M
BREADTH (M ₆₀)	6.38 M
DEPTH (M ₆₀)	2.54 M
FUEL OIL	15000 L
FRESH WATER	10000 L
PASSENGERS	230 P
CREW	4 P



AluCat 28m
230Pax
27K



AluCat 25



24.92M Fast Ferry – Day Cruise



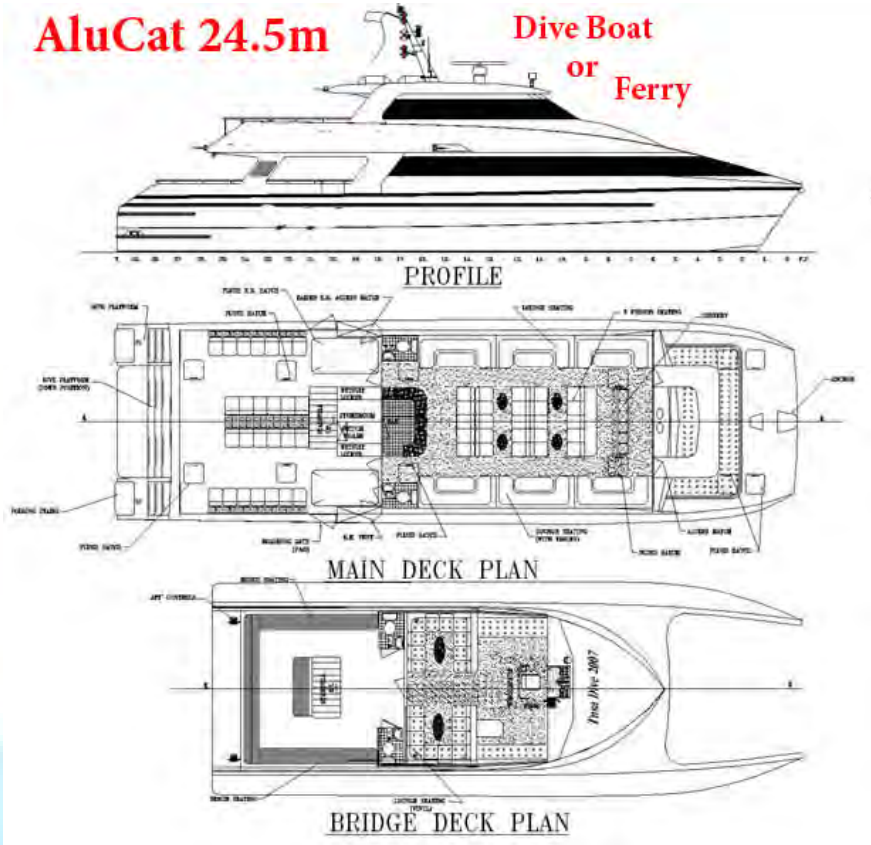
Vessel Type	Aluminium Passenger Catamaran
Class	As required
Home Port	Sydney Australia
Designer	Commercial Marine Consulting Services
Length Overall	24.92 Metres
Length Waterline	23.83 Meters
Beam	7.76 Metres
Draught	1.40 Metres
Construction Material	Aluminium
Main Engines	2 x Cummings N143M 525 hp each
Gearboxes	2 x ZF322A
Propellers	2 x 28.5" 5 bladed
GPS, Colour Plotter and Radar	Raymarine
Fuel	3000 litres
Maximum Speed	27 knots
Cruising Speed	24 knots
Passengers	Max 196



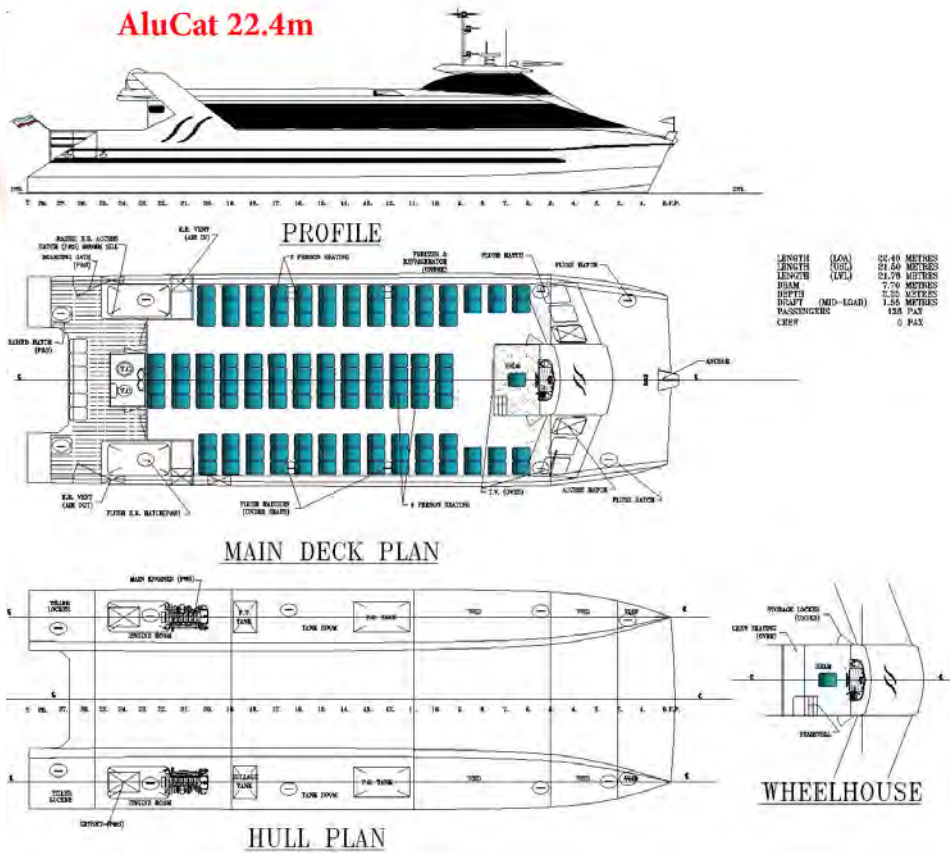
Seating Suggestions

AluCat 24.5m

Dive Boat
or
Ferry



AluCat 22.4m





Length overall	19.4 m
Maximum speed	28 kt
Operational speed	24 kt
Passengers	120
Crew	4
Fuel capacity	8000 litres
Propulsion	2 x 700HP to 900HP



Clean Entry

17.4m Fast Ferry * Pleasure Yacht * Day Cruise * Whale Watch



Length overall	17.4 m
Length waterline	16.6 m
Beam	6.5 m
Draught	1.35 m
Displacement, full load	35 T
Maximum speed	26 kt
Operational speed	22 kt
Passengers	80
Fuel capacity	2 x 1000 litres
Water capacity	1 x 4000 litres
Propulsion	2 x 230 kw Cummins

The designs on these pages are provided by Sea Speed Designs of Australia

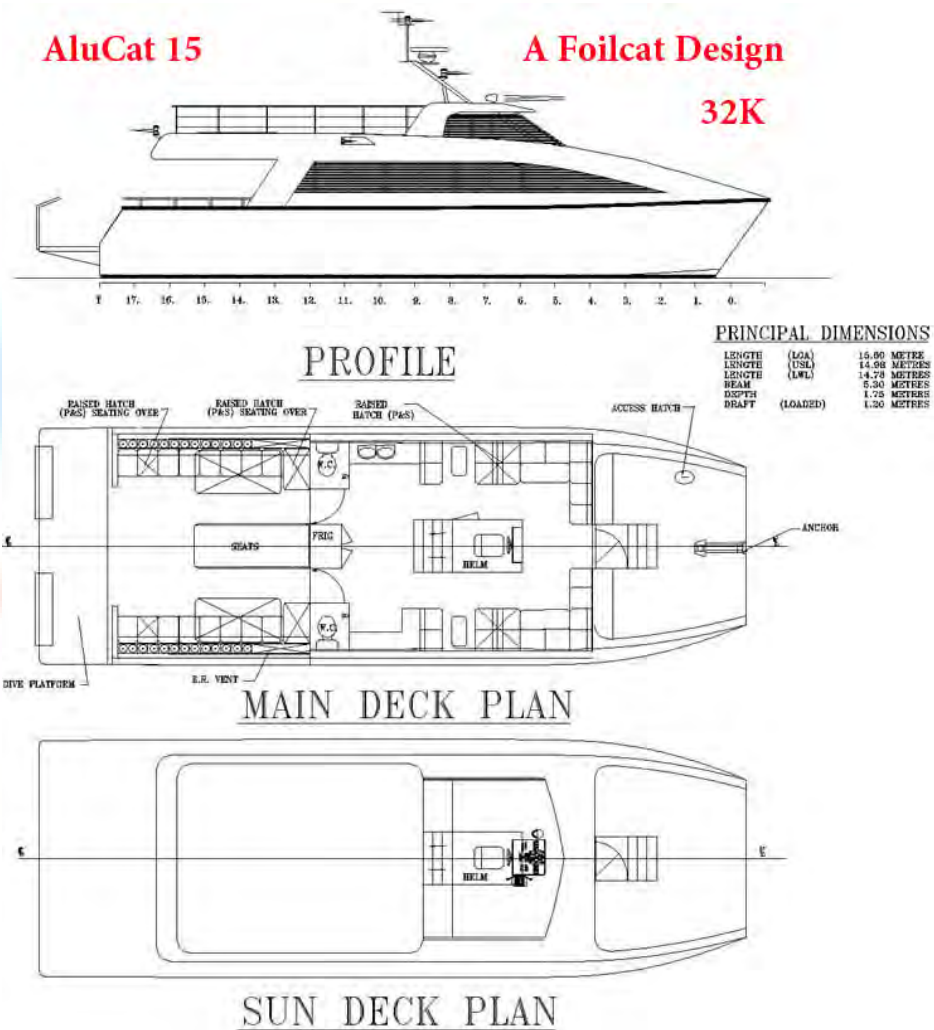
All our builds at AluminumNow Group associated shipyards are semi-custom to meet our clients as per specifications, equipment, engine and drive systems including classification and local regulations in country concerned always taking into account conditions in area of operation.



AluCat 15

A Foilcat Design

32K



*Pleasure *Fast Ferry * Crew Boat*



Alucat 13M

Fast Crew or 25Pax Ferry



13 Meter Crew/Ferry

This 13 metre crew boat has a top speed of 27 knots with 25 passengers with cruise at 25 knots. Powered by twin 480 hp marine diesels driving Waterjets this vessel has a draft at only 500mm making it an extremely useful shallow water vessel. Boat can be beached.

