

# 15m FAST INTERCEPTOR

56Knots - 16.7M LOA



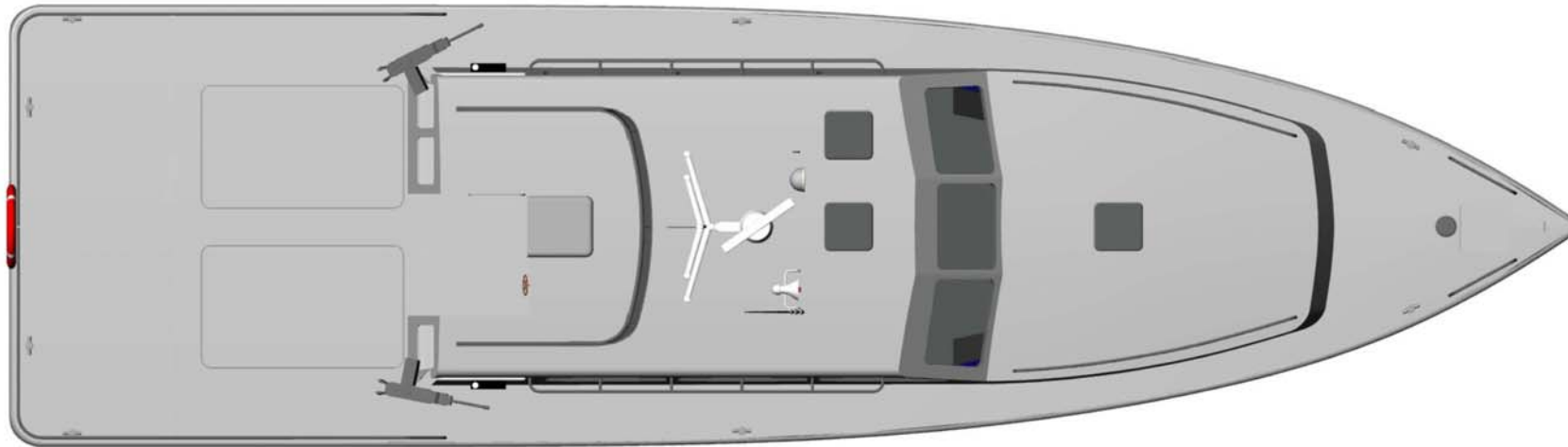
**The AluminumNow Group**

London, UK, West Africa, Turkey

[enquiries@aluminumnow.com](mailto:enquiries@aluminumnow.com)

# 15m FAST INTERCEPTOR

56Knots - 16.7M LOA



LOA: 16.7m  
Lmoulded: 15.0m  
LWL: 13.0m  
BEAM: 4.6m  
DRAFT: 0.8m  
FUEL: 2x1500lts  
WATER: 300lts  
MAIN ENGINES: 2 x MAN2842 LE407  
956kW @ 2300rpm  
GEARBOX: 2 x ZF2000  
PROPULSION: 2 x SDS4  
SPEED-max: 58knots  
SPEED-Cruise: 32knots  
RANGE-Cruise: 340nm

CONSTRUCTION:  
MARINE GRADE ALUMINIUM  
CLASS STANDARD:  
DNV R3 PATROL  
SURVEY: USL 2B

## Options:-

Gunner's Cockpit Forward  
Waterjets Sun Protection  
Shore Boat Rescue Zones

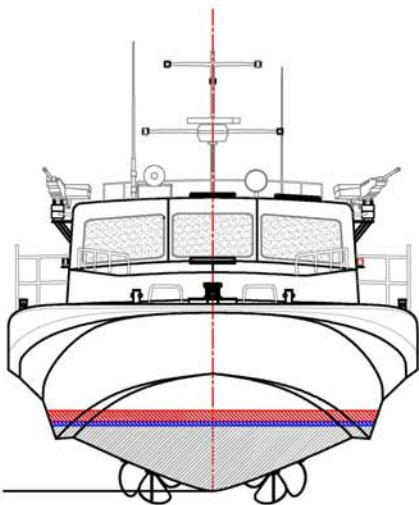
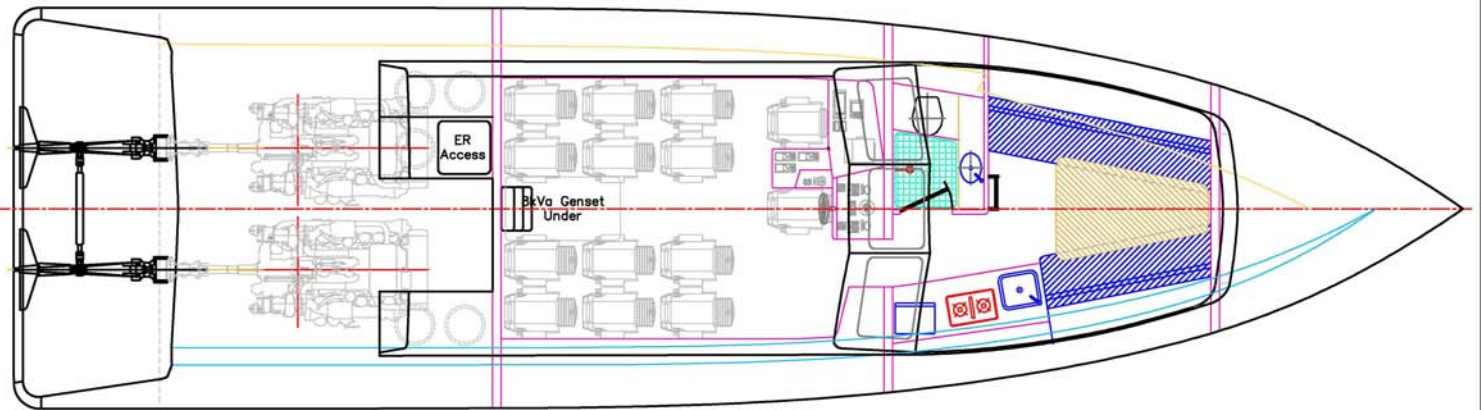
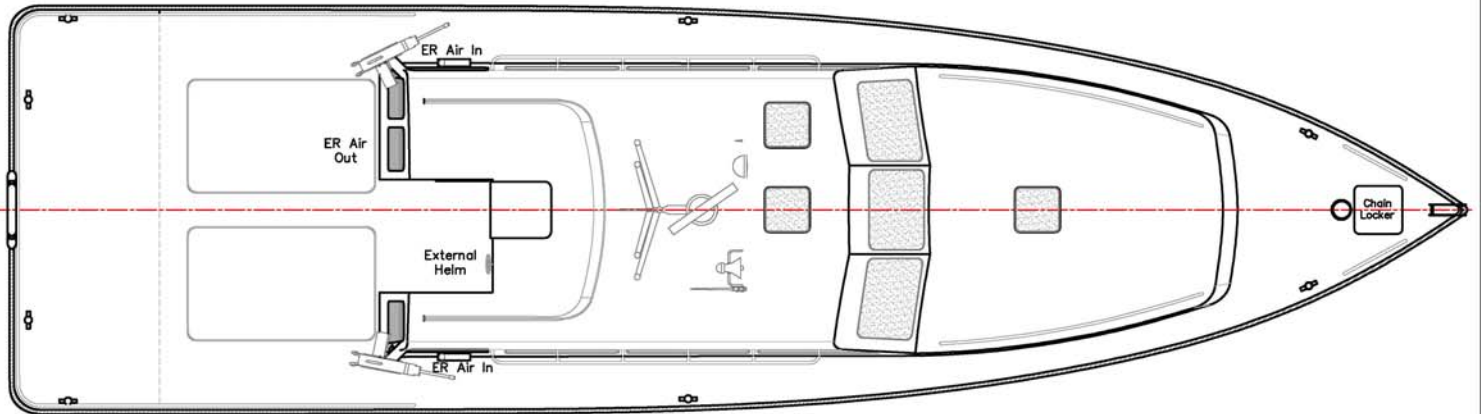
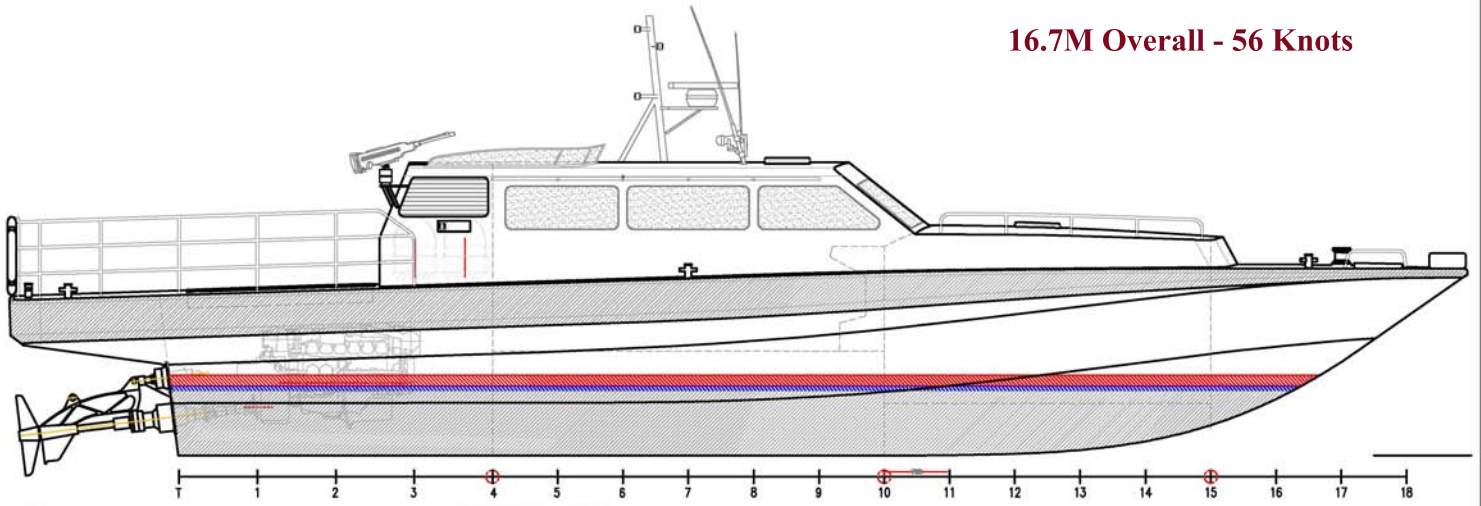
**The AluminumNow Group**

London, UK, West Africa, Turkey

[enquiries@aluminumnow.com](mailto:enquiries@aluminumnow.com)

# 15m FAST INTERCEPTOR

16.7M Overall - 56 Knots



LOA: 16.7m  
 Lmoulded: 15.0m  
 LWL: 13.0m  
 BEAM: 4.6m  
 DRAFT: 0.8m  
 FUEL: 2x1500lts  
 WATER: 300lts  
 MAIN ENGINES: 2 x MAN2842 LE407  
 956kW @ 2300rpm  
 GEARBOX: 2 x ZF2000  
 PROPULSION: 2 x SDS4  
 SPEED-max: 58knots  
 SPEED-Cruise: 32knots  
 RANGE-Cruise: 340nm

CONSTRUCTION:  
 MARINE GRADE ALUMINIUM

CLASS STANDARD:  
 DNV R3 PATROL  
 SURVEY: USL 2B



|                                |                |        |            |
|--------------------------------|----------------|--------|------------|
| VESSEL: 15m FAST ASSAULT CRAFT |                |        |            |
| TITLE: GENERAL ARRANGEMENT     |                |        |            |
| DWG No: P15-100                | DATE: 3/4/2006 | SCALE: | DRAWN: MDW |

Copyright by the Naval Architect concerned