

CWA 70m AHOSV

ENERGY
ENVIRONMENT
ECONOMY

MAIN DATA

Length overall 70.70 m

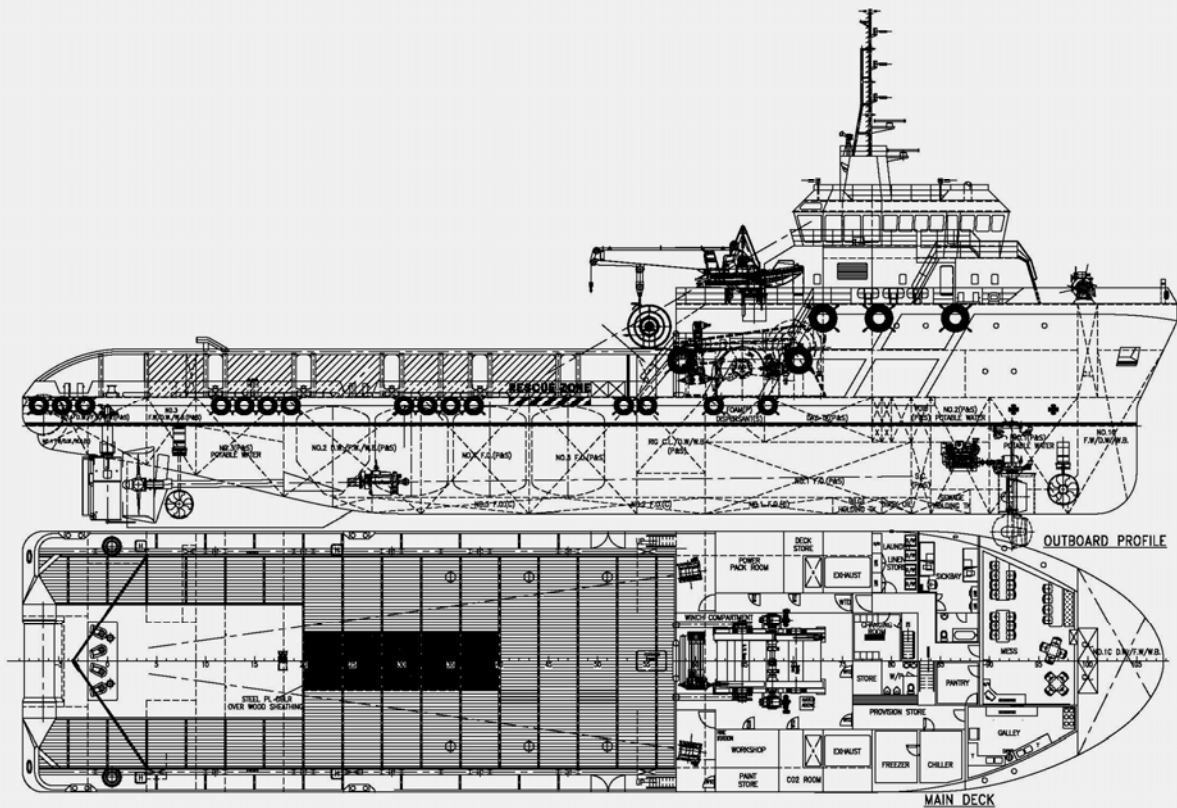
Bollard pull130 tonnes

Speed..... 14 knots

70m ANCHOR HANDLING / OFFSHORE SUPPORT VESSEL

- Towing
- Rescue
- Fire fighting
- Anchor handling
- Dynamic positioning DP 2
- 500m² deck area





MAIN DIMENSIONS

Length overall	70.70 m
Breadth mld	16.00 m
Depth mld	7.20 m
Deck area	500 m ²

CAPACITIES

Deadweight , draft	abt.	2454t
Deck strength	abt.	5.5t/m ²
Deck cargo	abt.	800t
Fuel oil	abt.	969 m ³
Potable water	abt.	682 m ³
Mud tanks	abt.	520 m ³
Bulk cement/barite	abt.	380 m ³
Drill water/water ballast	abt.	450 m ³

PERFORMANCE

Speed	abt.	14
knots		
Bollard pull	abt.	130
tonnes		

CLASS NOTATION

ABS Maltese Cross +A1 , Fire Fighting 1 + DPS 2 + AMS Circle E, Anchor Handling, Offshore Support / Fire-fighting & Towing Service for Unrestricted Service.

DECK EQUIPMENT

Deck crane	7.5t SWL @ 5m
radius	
Anchor windlass	14t @
13m/min.	
Tugger winch	2 x 15t @
21m/min.	
Stern roller	500t SWL

MACHINERY AND PROPULSION

Main engine	2 x 5440 BHP @ 750 rpm
Main generator	2 x 590 kW, CAT 3412 DITA
Retractable bow thruster	Ulstein Aquamaster
	Model UL 91 1600
Retractable bow thruster engine	Cummins KTA 38 M1
Bow thruster	Rolls-Royce TT1650 DPN

ACCOMMODATION

The vessel has a total complement of 40 men comprising 4 x 1-man, 10 x 2-man & 4 x 4-man cabins.

REFERENCES

Shipyard	McTay Marine Ltd.
Design ID	ALUCWA 70m AHOSV
Reference number	ALUC4142
E-mail for info	enquiries@aluminumnow.com
Details are correct but subject to possible changes.	



WÄRTSILÄ